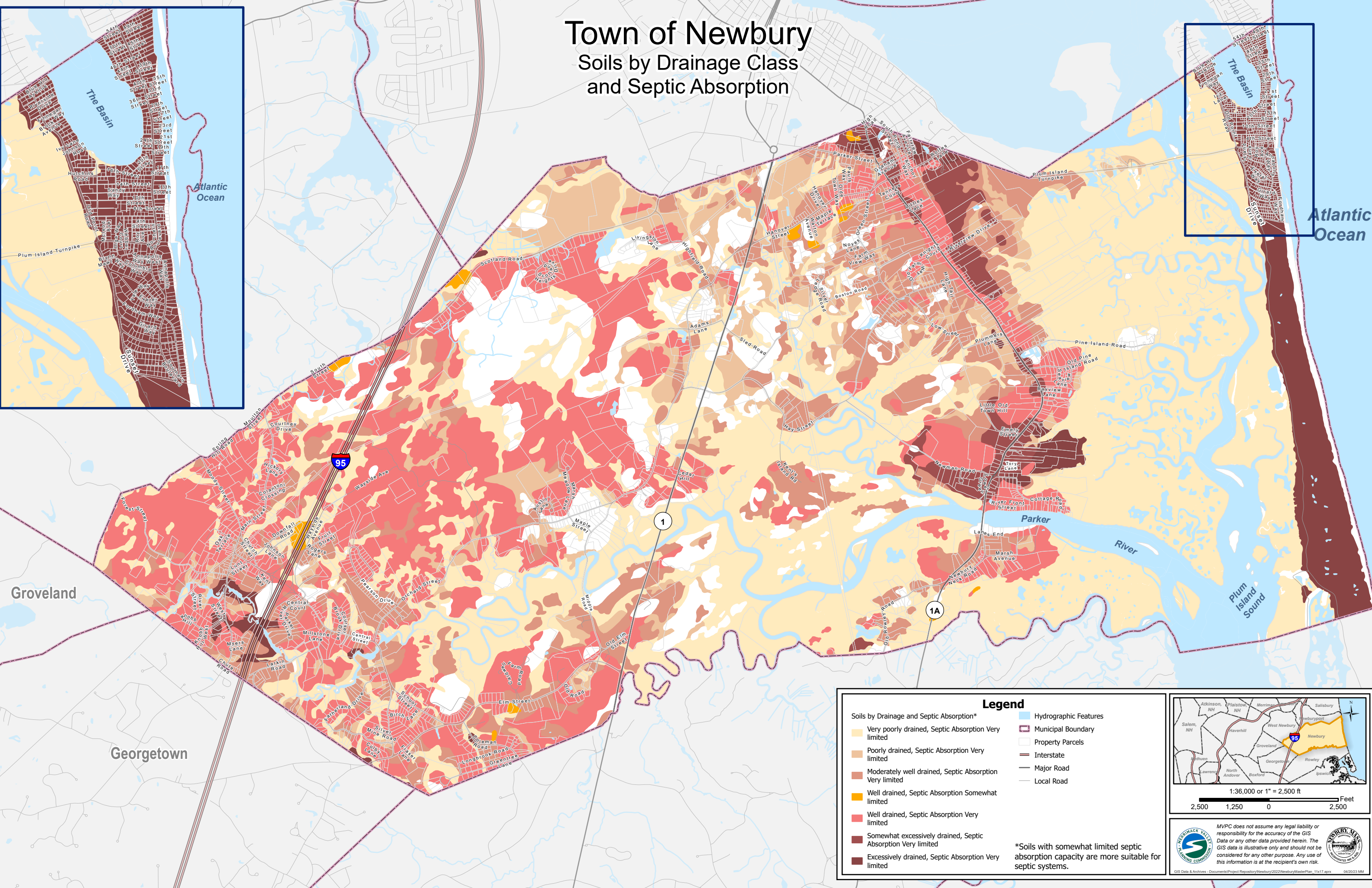


# Town of Newbury

## Soils by Drainage Class and Septic Absorption



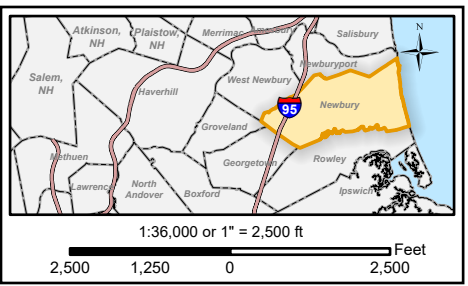
**Soils by Drainage and Septic Absorption\***

- Very poorly drained, Septic Absorption Very limited
- Poorly drained, Septic Absorption Very limited
- Moderately well drained, Septic Absorption Very limited
- Well drained, Septic Absorption Somewhat limited
- Well drained, Septic Absorption Very limited
- Somewhat excessively drained, Septic Absorption Very limited
- Excessively drained, Septic Absorption Very limited

**Legend**

- Hydrographic Features
- Municipal Boundary
- Property Parcels
- Interstate
- Major Road
- Local Road

\*Soils with somewhat limited septic absorption capacity are more suitable for septic systems.



MVPC does not assume any legal liability or responsibility for the accuracy of the GIS Data or any other data provided herein. The GIS data is illustrative only and should not be considered for any other purpose. Any use of this information is at the recipient's own risk.

GIS Data & Archives - Documents\Project Repository\Newbury\2022\NewburyMasterPlan\_11x17.aprx 04/20/23 MM

Groveland  
Georgetown

Atlantic Ocean

Plum Island Sound

Parker River

1A

1

95