

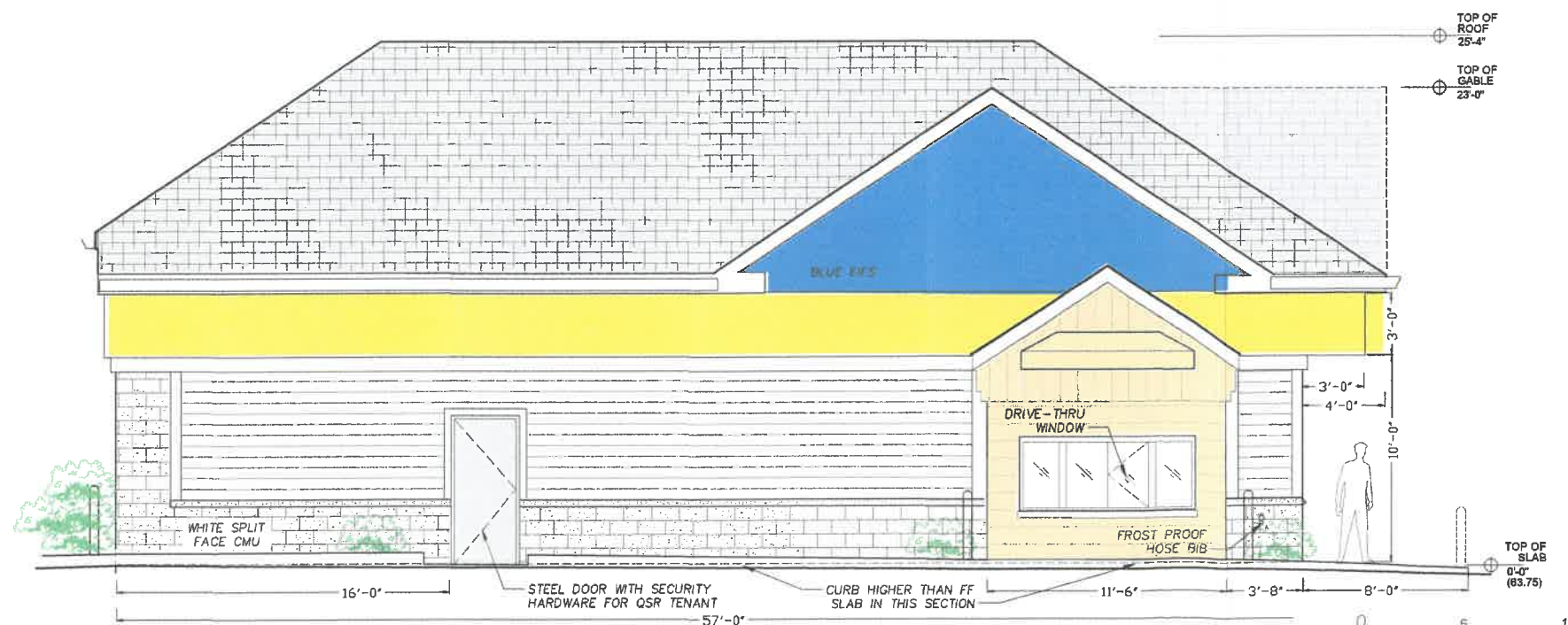


SOUTH ELEVATION (FRONT)



GENERAL NOTES

1. PROPOSED BUILDING IS A SINGLE STORY SLAB ON GRADE MASONRY AND WOOD FRAME BUILDING.
2. SIGNAGE SHOWN ON THIS SHEET AND SG-1 SIGN AND GRAPHICS SHEET ARE PROPOSED, IT IS INTENDED TO PERMIT SIGNAGE SEPARATELY AS ALLOWED BY RIGHT. PETITIONER IS NOT SEEKING VARIANCE OR WAIVER FOR SIGNAGE AS PART OF SITE PLAN OR SPECIAL PERMIT APPROVAL.
3. ALL DIMENSIONS TO FACE OF FINISH EXCEPT WHERE NOTED AS OTHERWISE.
4. CONFIRM MOUNTING HEIGHT OF TRANSACTION DRAWER AND ATM FOR PROPER ADA ACCESSIBILITY.
5. LOCATION OF KNOX BOX AND EXTERNAL FIRE ALARM/STROBE SUBJECT TO FINAL LOCATION APPROVAL BY FIRE DEPARTMENT.
6. TRADE CONTRACTORS INCLUDING STOREFRONT FABRICATOR SHALL SUBMIT SHOP DRAWINGS AND/OR EQUIPMENT CUT SHEETS AND SPECS PRIOR TO PROCEEDING WITH PURCHASE OF MATERIALS OR FABRICATION.
7. ALUMINUM STOREFRONT - PRE-FINISHED BLUE ALUMINUM FRAMES (SEE A.L. PRIME SPECIFICATION) WITH ONE INCH INSULATED GLASS, TEMPERED AS REQ'D BY CODE. BOTTOM PANELS AT COUNTER TO BE OPAQUE OR SOLID INSULATED PANEL.
8. SIZE, SHAPE, AND FINISH OF DRIVE-THRU BUILDING BUMP-OUT TO BE ADJUSTED PER TENANT CORPORATE IMAGE AND COLORS.
9. TENANT DRIVE-THRU WINDOW AWNING STYLE, HEIGHT, SIZE AND COLOR ARE CONCEPTUAL ONLY AND TO BE ADJUSTED PER TENANT SPECIFICATIONS



WEST ELEVATION (DRIVE-THRU SIDE)



RECEIVED
DEC 28 2020
Newbury Planning Board



4Prime
A.L. PRIME ENERGY
CONSULTANT, INC.
18 LARK AVENUE
SAUGUS MA 01906
(781) 248-0201

BYFIELD, MA
23 CENTRAL STREET

**EXTERIOR
ELEVATIONS**

23 SEP 2020 1 AG CHANGED ROOF LINE PER BOARD COMMENTS
23 APR 2020 0 AG ORIGINAL DRAWING DATE

DATE REV BY DESCRIPTION

DWG FILE: TBD-019-01 BYFIELD
SCALE: AS NOTED

A-2.1