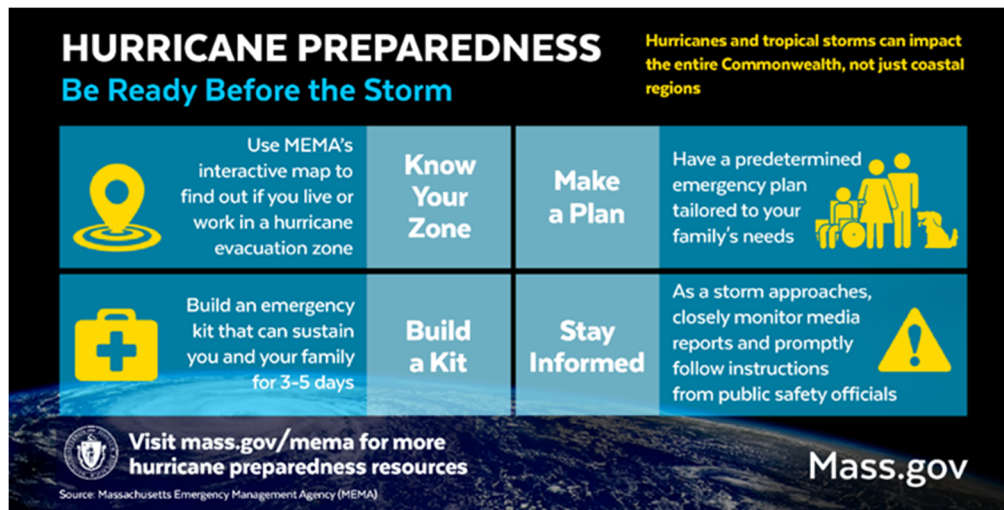


# 2021 Atlantic Hurricane Season Begins

*Start of Hurricane Season is an Opportunity to Prepare*



**FRAMINGHAM, MA** – June 1st marks the official start of the Atlantic Hurricane Season, which runs through November 30th. While most hurricanes and tropical storms that have hit New England occurred during August and September, residents are encouraged to take time now to begin preparing before a storm. Throughout hurricane season, the Massachusetts Emergency Management Agency (MEMA) will share preparedness information to help residents be aware of, and prepare for, the impacts of hurricanes and tropical storms.

The National Oceanic and Atmospheric Administration (NOAA) [seasonal outlook predicts](#) another active, above-normal, Atlantic hurricane season. While NOAA is not expecting the historic activity seen last year, it only takes one storm to make landfall and severely affect an area.

The beginning of hurricane season is a timely reminder for all residents to prepare for the effects of a hurricane by learning if you live in a hurricane evacuation zone, developing an emergency plan, building an emergency kit, and staying informed before, during, and after the storm.

Hurricanes and tropical storms can have an impact on the entire Commonwealth, not just coastal communities. This year marks the 10th anniversary of Tropical Storm Irene, which produced severe flooding damage in communities throughout Central and Western Massachusetts in 2011. All Massachusetts residents need to prepare for the possibility of storm impacts - to learn more about the hazards and how to prepare, visit MEMA's hurricane webpage: [www.mass.gov/mema/hurricanes](http://www.mass.gov/mema/hurricanes).

## Know Your Evacuation Zone

Massachusetts has designated hurricane evacuation zones, designated as Zone A, Zone B, and Zone C, for areas of the state at risk for storm surge flooding associated with tropical storms or hurricanes. If evacuations are necessary because of a tropical storm or hurricane, local or state officials will notify people living, working, or vacationing in evacuation zones to leave the area. Even areas not directly along a coastline may be at risk for storm surge flooding during a tropical storm or hurricane. Find out if you are in a hurricane evacuation zone by visiting the 'Know Your Zone' interactive map located on MEMA's website at [www.mass.gov/knowyourzone](http://www.mass.gov/knowyourzone).

## Make an Emergency Plan

Develop a plan with your family members of what to do, how to find each other, and how to communicate in a tropical storm or hurricane. An emergency plan should include:

- Meeting Locations
- Emergency Contact Information
- Evacuation Plans