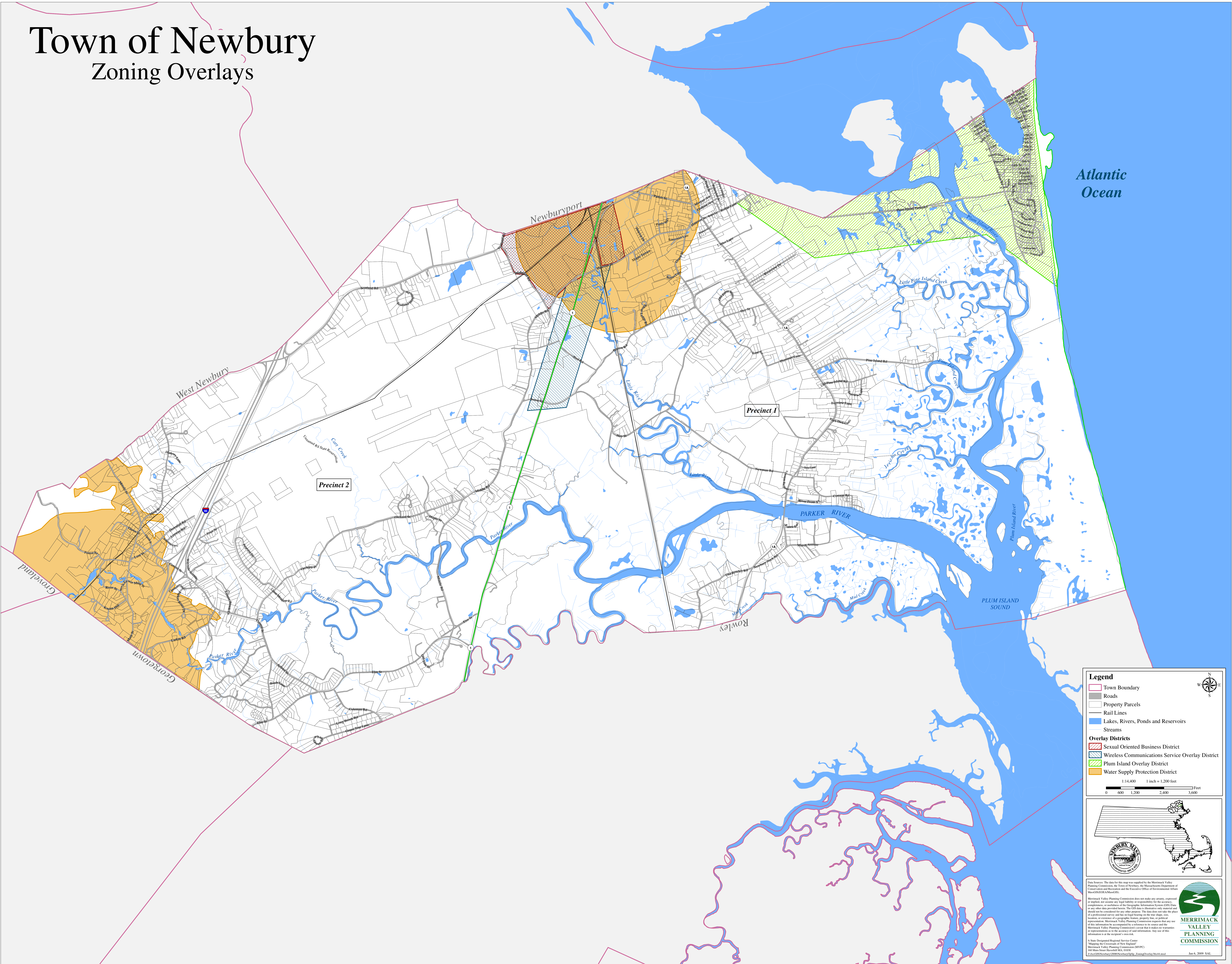


Town of Newbury

Zoning Overlays



Legend

- Town Boundary
- Roads
- Property Parcels
- Rail Lines
- Lakes, Rivers, Ponds and Reservoirs
- Streams

Overlay Districts

- Sexual Oriented Business District
- Wireless Communications Service Overlay District
- Plum Island Overlay District
- Water Supply Protection District

1:14,400 1 inch = 1,200 feet

0 600 1,200 2,400 3,600 Feet

DATE SOURCES: The data for this map was supplied by the Merrimack Valley Planning Commission, the Town of Newbury, the Massachusetts Department of Conservation and Recreation and the Executive Office of Environmental Affairs. MapGIS/DOE/MassGIS.

Merrimack Valley Planning Commission does not make any warranty, expressed or implied, nor assume any legal liability or responsibility for the accuracy, completeness, or usefulness of the Geographic Information System (GIS) Data or any other data provided herein. The GIS data is illustrative only material and should not be considered for any other purpose. The data does not take the place of a professional survey and has no legal bearing on the title, shape, size, location, or interests in a geographic feature, property line, or political representation. Merrimack Valley Planning Commission requests that any use of this information be accompanied by reference to its source and the Merrimack Valley Planning Commission's caveat that it makes no warranties or representation as to the accuracy of said information. Any use of this information is at the recipient's own risk.

A State-Designated Regional Service Center
"Mapping the Commonwealth of New England"
Merrimack Valley Planning Commission (MVPC)
600 Main Street Haverhill MA, 01830
1-800-555-5555
ZoningOverlayMap1.mxd

MERRIMACK VALLEY PLANNING COMMISSION

Jun 6, 2009 SAL