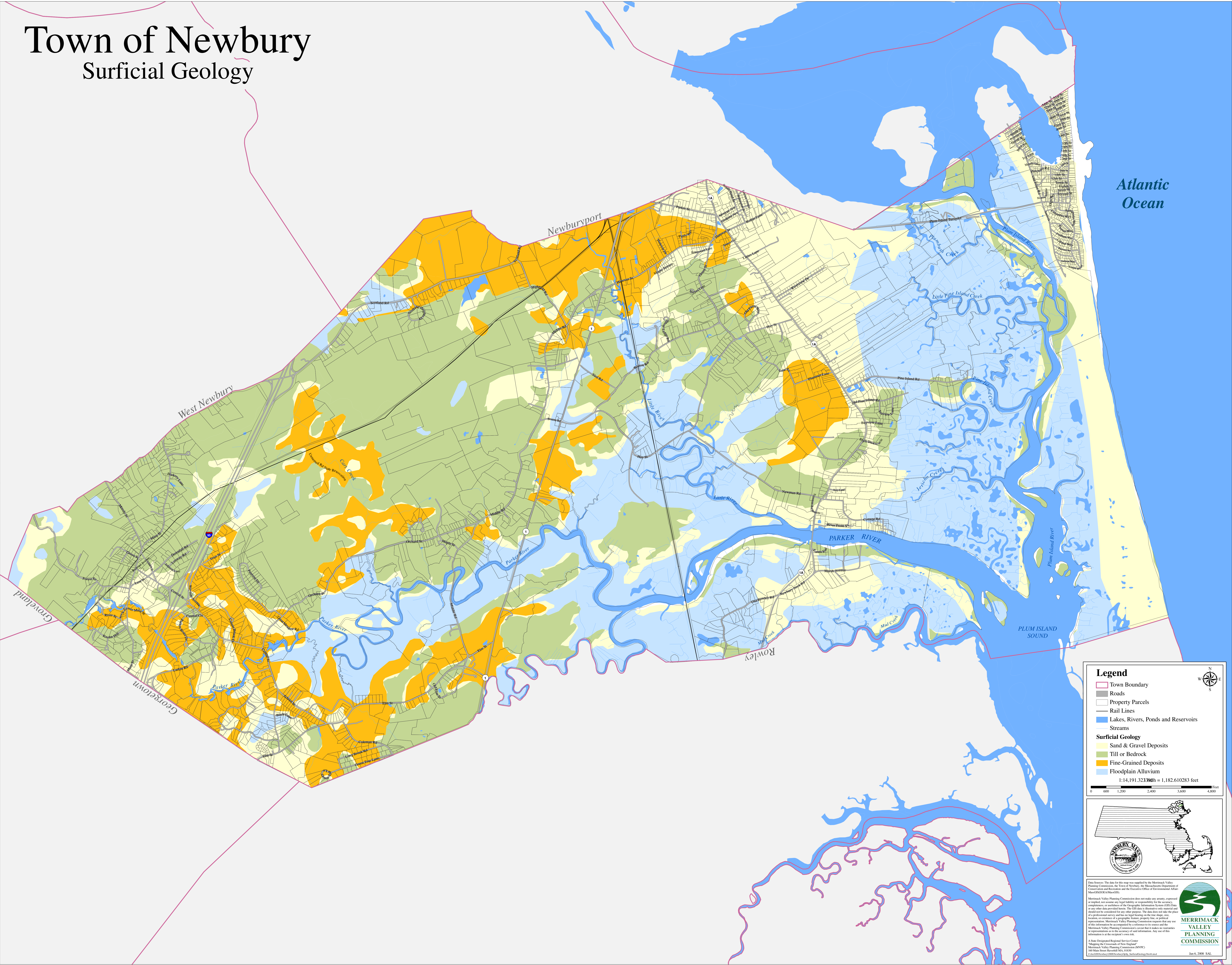


# Town of Newbury

## Surficial Geology



**Legend**

- Town Boundary
- Roads
- Property Parcels
- Rail Lines
- Lakes, Rivers, Ponds and Reservoirs
- Streams
- Surficial Geology**
  - Sand & Gravel Deposits
  - Till or Bedrock
  - Fine-Grained Deposits
  - Floodplain Alluvium

1:14,191,323.300ft = 1,182,610,283 feet

Data Sources: The data for this map was supplied by the Merrimack Valley Planning Commission, the Town of Newbury, the Massachusetts Department of Environmental and Heritage Affairs, and the Executive Office of Environmental Affairs. Merrimack Valley Planning Commission does not make any warranty, expressed or implied, nor assume any legal liability or responsibility for the accuracy, completeness, or usefulness of the Geographic Information System (GIS) data or any other data provided herein. The GIS data is intended only as a reference and should not be used for any other purpose. The data does not show the place of a professional survey and has no legal bearing on the title, shape, size, location, or existence of a geographic feature, property line, or other information. Merrimack Valley Planning Commission requests that any use of this information be accompanied by a reference to this map and the Merrimack Valley Planning Commission's caveat that it makes no warranties or representations as to the accuracy of said information. Any use of this information is at the user's own risk.

A State Designated Regional Service Center  
Mapping the Commonwealth of Massachusetts  
Merrimack Valley Planning Commission (MVPC)  
100 Main Street, Haverhill, MA, 01830  
Contact: (978) 376-2000 ext. 200 or mvpc@mvpc.org

MERRIMACK VALLEY PLANNING COMMISSION

Jun 6, 2008 SAL